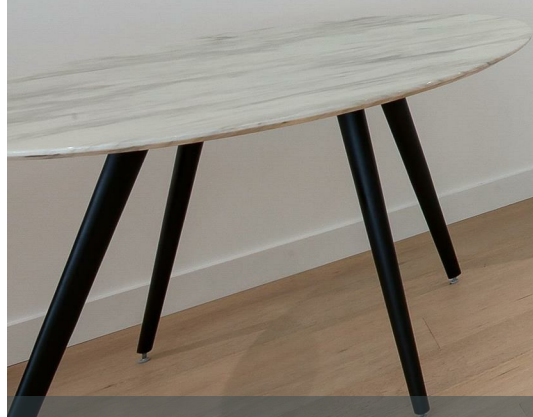


*Franklyn
James*



2 Rendal Way, Silvertown, E16 2TB

£2,750 Per Month

*Franklyn
James*



2 Rendal Way, Silvertown, E16 2TB

£2,750 Per Month

- 4 Weeks' Free Rent Incentive Available
- Located in the sought-after Royal Wharf riverside development
- Spacious 5th floor three-bedroom apartment (max two sharers or family)
- Bright open-plan living area with floor-to-ceiling windows
- Contemporary fully fitted kitchen with integrated appliances
- Principal bedroom with stylish en-suite shower room
- Modern main bathroom finished to a high specification
- Access to residents' clubhouse with 25m swimming pool, gym & fitness suite
- 24-hour concierge service and beautifully landscaped podium gardens
- Excellent transport links – short walk to Pontoon Dock DLR (Canary Wharf ~9 mins, Bank <20 mins)

EPC rating- B
Tax band- F



4 WEEKS FREE RENT

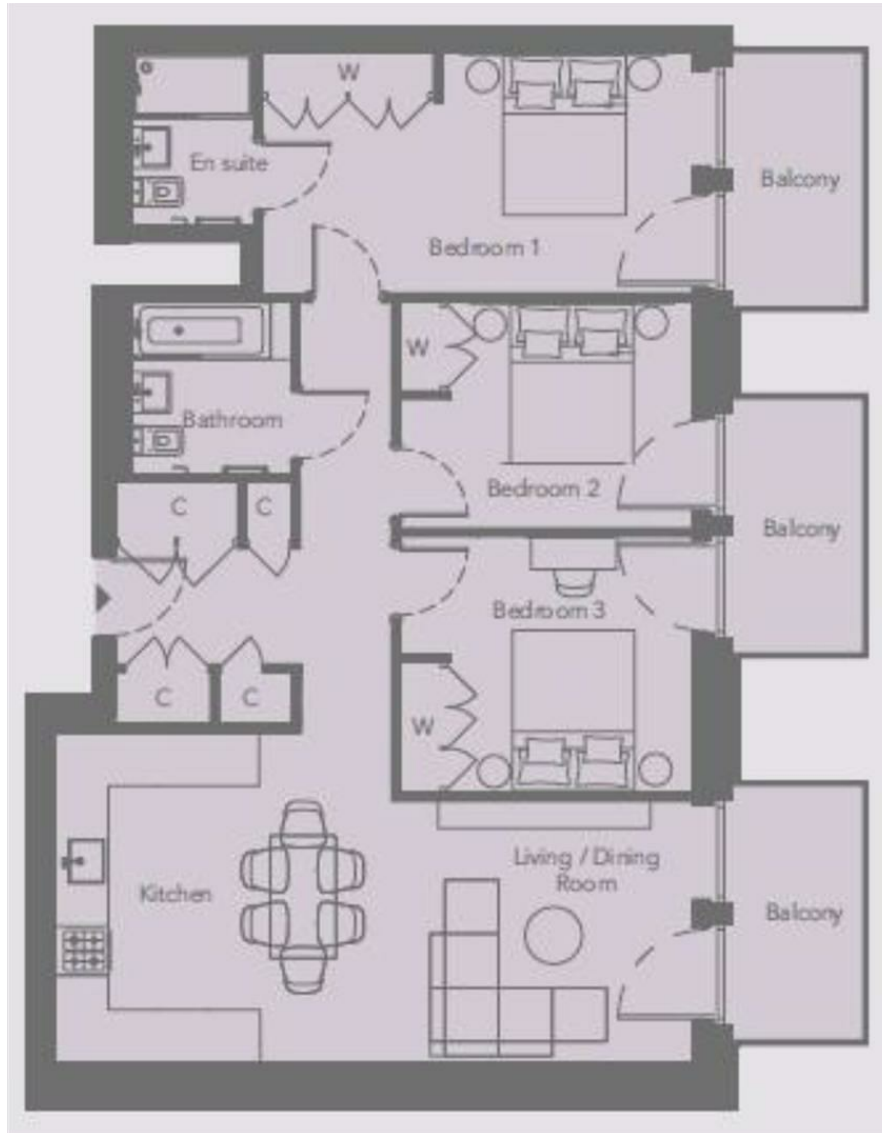
Property only suitable for a maximum of two separate sharers or family

Located within the highly desirable Royal Wharf development in London's Docklands, this impressive three bedroom 5th floor apartment offers living in a lively riverside setting. The area is well regarded by professionals and families alike benefiting from excellent transport links, attractive green spaces and a wide range of nearby cafés, shops, and everyday amenities.

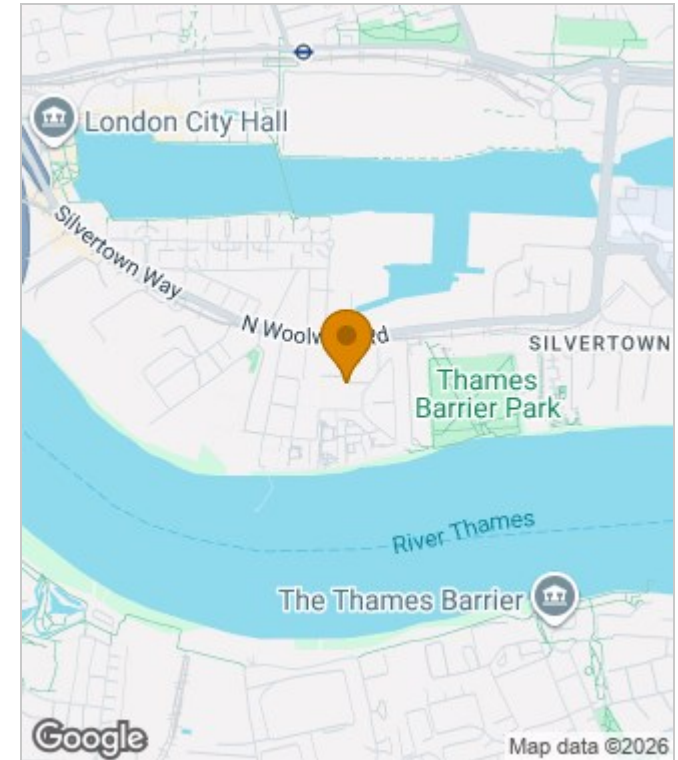
The property features a bright and spacious open plan living area, complemented by floor to ceiling windows that flood the space with natural light. The modern kitchen is fully fitted with high quality integrated appliances creating a perfect environment for both entertaining and day to day living. All three bedrooms are generously sized, offering comfortable accommodation with ample storage and large windows. The principal bedroom includes a well appointed en suite shower room, while the main bathroom is finished to a high specification.

Residents benefit from access to a beautifully maintained podium garden providing a peaceful outdoor space to unwind. There is also exclusive use of a residents' clubhouse, featuring a 25-metre swimming pool, gym and fitness facilities alongside the added convenience of a 24-hour concierge service.

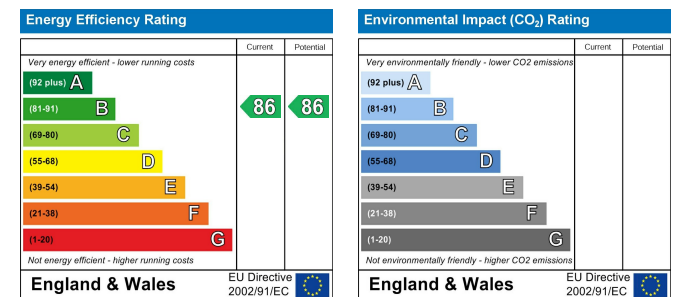
Ideally positioned just a short walk from Pontoon Dock DLR station, the property offers excellent connectivity, with Canary Wharf reachable in around 9 minutes and Bank in under 20 minutes. The surrounding area also offers riverside walks, nearby parkland, and a variety of dining and leisure options, making this an exceptional place to live.



Area Map



Energy Performance Graph



These particulars, whilst believed to be accurate are set out as a general outline only for guidance and do not constitute any part of an offer or contract. Intending purchasers should not rely on them as statements of representation of fact, but must satisfy themselves by inspection or otherwise as to their accuracy. No person in this firm's employment has the authority to make or give any representation or warranty in respect of the property.